

# Fundamentals #2 Variations

Clarinet  
Bass Clarinet

[www.JustinDickson.com/Band](http://www.JustinDickson.com/Band)

These are exercises in counting and playing with beautiful tone quality.

While playing these exercises, all students should:

1. Tap your foot with the beat.
2. Watch the conductor.
3. Count 1-2-3-4 in your mind, and make sure you are ending notes together.
4. Listen to everyone else to make sure you are playing the same volume (don't stick out).
5. Hold your notes steady, with a beautiful tone quality. Don't force it, don't wiggle.
6. Sit up straight in your chair, and tilt your head up so your throat is open.

1

Exercise 1 consists of two staves of music in 4/4 time. The first staff contains five measures of half notes with slurs: G4, A4, B4, C5, B4, A4, G4. The second staff contains five measures of half notes with slurs: F4, E4, D4, C4, B3, A3, G3.

2

Exercise 2 consists of two staves of music in 4/4 time. The first staff contains five measures of quarter notes with slurs: G4, A4, B4, C5, B4, A4, G4. The second staff contains five measures of quarter notes with slurs: F4, E4, D4, C4, B3, A3, G3.

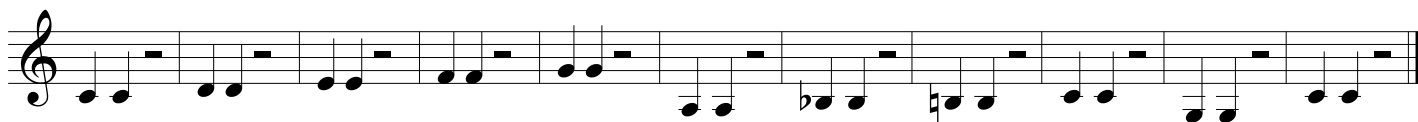
3

Exercise 3 consists of two staves of music in 4/4 time. The first staff contains five measures of quarter notes with slurs: G4, A4, B4, C5, B4, A4, G4. The second staff contains five measures of quarter notes with slurs: F4, E4, D4, C4, B3, A3, G3.

4



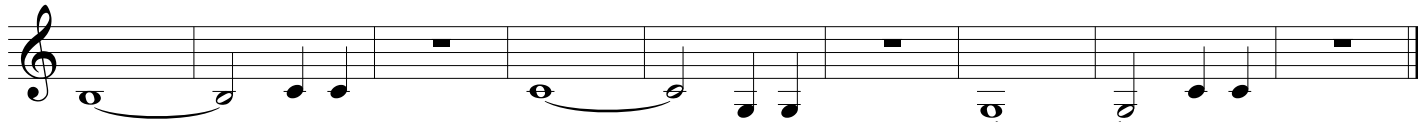
5



6



7



8

Exercise 8 consists of three staves of music. The first staff begins with a treble clef and a key signature of one flat (B-flat). The melody is composed of quarter and eighth notes, with some notes beamed together. The second staff continues the melody, featuring a mix of quarter and eighth notes, with some notes beamed together. The third staff concludes the exercise with a double bar line.

9

Exercise 9 consists of three staves of music. The first staff begins with a treble clef and a key signature of one flat (B-flat). The melody is composed of quarter and eighth notes, with some notes beamed together. The second staff continues the melody, featuring a mix of quarter and eighth notes, with some notes beamed together. The third staff concludes the exercise with a double bar line.

10

Exercise 10 consists of three staves of music. The first staff begins with a treble clef and a key signature of one flat (B-flat). The melody is composed of quarter and eighth notes, with some notes beamed together. The second staff continues the melody, featuring a mix of quarter and eighth notes, with some notes beamed together. The third staff concludes the exercise with a double bar line.

